

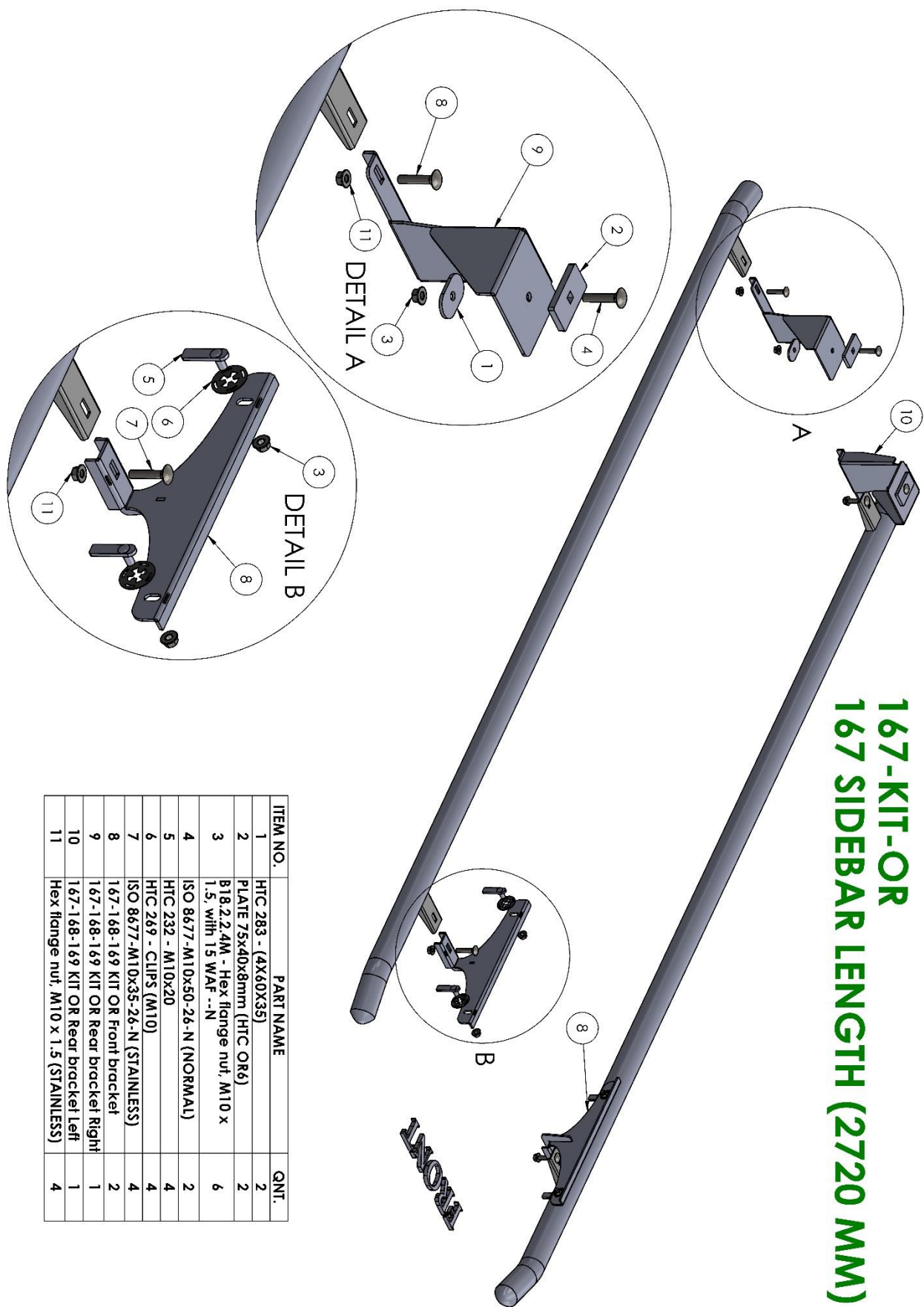


**Mercedes Benz(E)Sprinter RWD + 4x4**

**167 KIT-OR Sidebars WB 4032**

**INSTALLATION GUIDE**

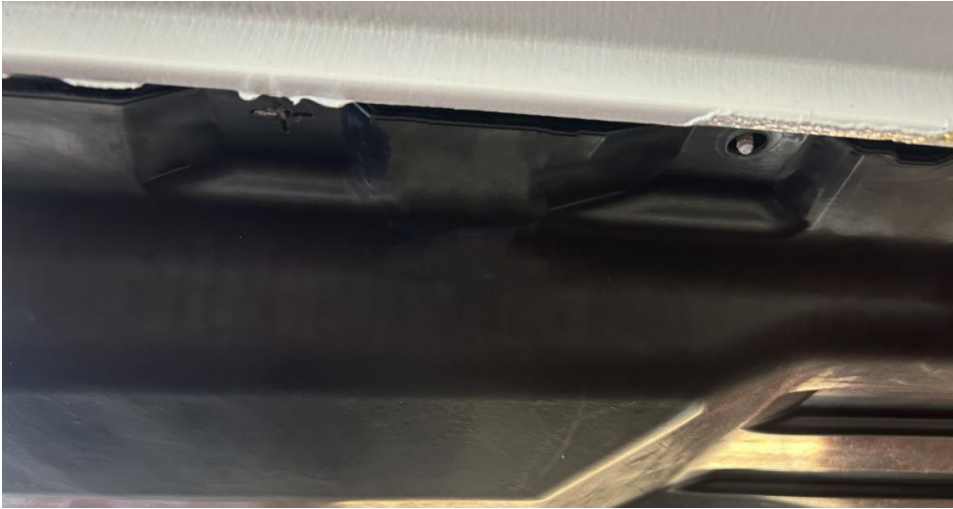
Composition:



| ITEM NO. | PART NAME   | QNT. |
|----------|---|------|
| 1        | HTC 283 - (4X60X35)                                     | 2    |
| 2        | PLATE 75x40x8mm (HTC OR6)                               | 2    |
| 3        | B18.2.2.4M - Hex flange nut, M10 x 1.5, with 15 WAF --N | 6    |
| 4        | ISO 8677-M10x50-26-N (NORMAL)                           | 2    |
| 5        | HTC 232 - M10x20  | 4    |
| 6        | HTC 269 - CLIPS (M10)                                   | 4    |
| 7        | ISO 8677-M10x35-26-N (STAINLESS)                        | 4    |
| 8        | 167-168-169 KIT OR Front bracket                        | 2    |
| 9        | 167-168-169 KIT OR Rear bracket Right                   | 1    |
| 10       | 167-168-169 KIT OR Rear bracket Left                    | 1    |
| 11       | Hex flange nut, M10 x 1.5 (STAINLESS)                   | 4    |

**Front bracket:**

**Remove Front and middle plastic cover if mounted on vehicle**



**Front left and right**



**Remove insert 2x and insert HTC 230 + HTC 269 Inside**



**Don't forget bold clip, protects bold from falling Inside the body**

**Place front brackets on the bolts and hand tighten in**

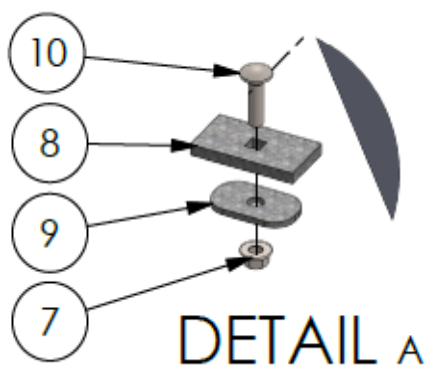
## Rear brackets

### Connection points 2x Left & 2x Right



Put plate 8 + bold 10 inside connection points

Connection points

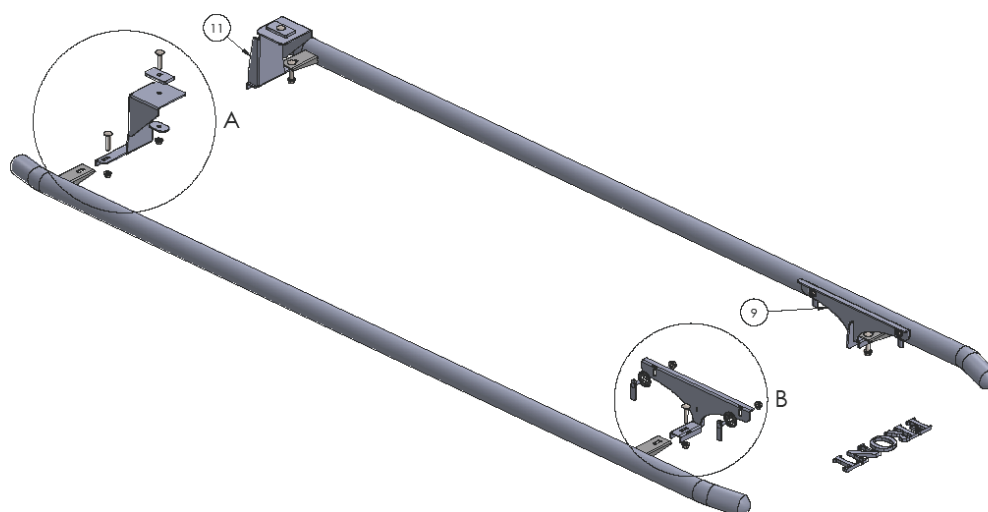


Place rearbracket , ad mounting plate 9 and hand tighten with M10 nut



### Sidebars:

After mounting the brackets, place sidebars on the brackets and hand-tighten with Bolts M10, washer and locknut.



After mounting sidebars, make sure sidebars and brackets are in right position with the body of your van

line up your brackets and tighten M10 with 50Nm, then make the sidebars are in position and tighten M10 with 50 Nm



Place back plastic covers and cut out by brackets